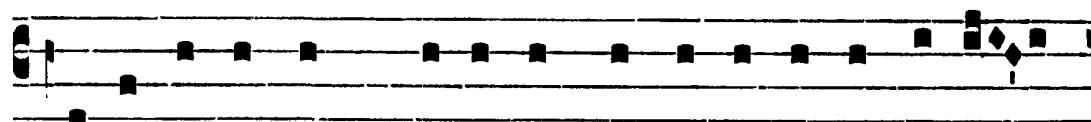


Grad.

5.

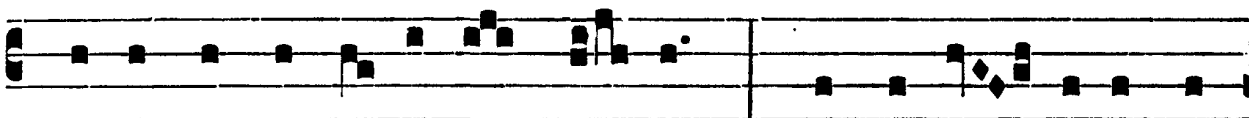
B



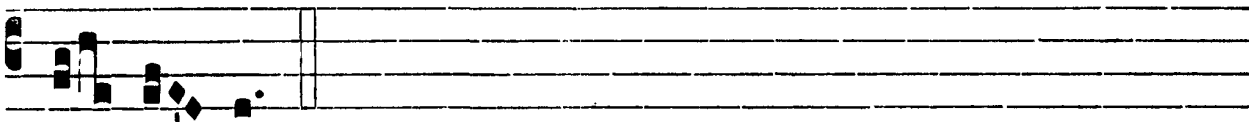
Ene-díctus es, * Dómi-ne qui intu- é-ris abýs-



sos, et sédes super Ché- ru- bim. √. Be-ne-díctus es, Dó-



mi-ne, in firma-ménto caé- li, et laudá- bi- lis in



saé- cu- la.

Translation

Blessed art thou, O Lord, who beholdest the depths, and sittest upon the Cherubim.

Blessed art thou, O Lord, in the firmament of heaven, and worthy of praise forever.

